



BALT 衡碁科技
創新·用心·貼心 BalTech Co., Ltd.

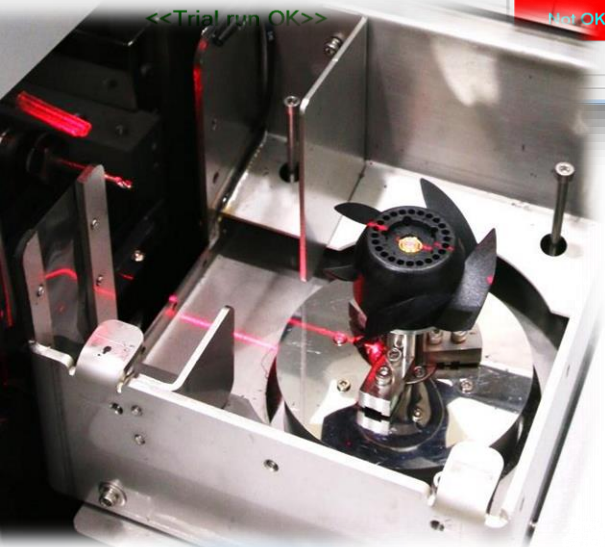
Automatic *Balancing Machine*

QB-4200-ARKS1

Characteristics:

- Very Short Cycle Time
- Easy Learning & Operation
- Precise Measuring Unit
- Accurate Remove Unbalance
- High Reliable Chuck System
- 3D Model Scanning
- Fan Leaves Protection
- Unbalance Separation
- ISO1940 Calculator
- Auto Removal of Burrs
- Signal Tower Indicator
- Safety Light Curtains
- Mass Production Database





- **Fast tempo, short cycle time**
Precise measure, once on success
- **Easy use, no training cost**
Avoid human error.
- **High precision chuck module**
Precise chuck, once on success
- **Accuracy remove mass**
Zero defect rate, no rework
- **High reliable chuck system**
Stable chuck system, low GR&R
- **3D model scanning**
Auto 3D, never destroy fan leaves
- **Fan Leaves Protection**
Perfect fan leaves protection
- **ISO1940 Calculator**
International unbalance standard
- **Automatic Removal of Burrs**
Burrs removing & waste collection
- **Signal Tower Indicator**
Safety Alert and real-time status
- **Safety light curtains**
Protect the operator from safety
- **Mass production database**
Data automatically access

QB-4200 Specifications

Work-piece (diameter x height) (mm)	(40.0 x 6) - (60.0 x 50.0)
Types of balancing measuring	Single/Dual/Three Planes
Maximal weight of work-piece (gram)	50
Axis of removing fan-unbalance	Three-axis positioning and correction (X,Z,R axis)
Chuck moving range (mm)	1.2 – 3.0
Maximal depth of milling (mm)	< 30.0
Resolution of depth milling (μm)	±5.0um
Resolution of rotating (degree)	±0.1
Rotating speed of miller (rev/min, RPM)	6,000 - 11,000
Speed of miller feeding (mm/ second)	< 10.0
Maximal moving speed of positioning (mm / second)	< 50.0
Range of miller cutter (mm)	2.0 – 6.0
Dimension (length x width x height) (cm)	140 x 75 x 140
The weight of auto machine (Kg)	<450
Power requirements	AC 200V - 220V / 50 - 60HZ
Power consumption	< 7,500 Watt

※ Specifications are subject to change without prior notice



BALTech Co. Ltd.

No.122, Zhongzheng 2nd Rd. Hukou Township, Hsinchu County 303 Taiwan, R.O.C.

Tel: +886-3-590-8611 (Rep.)

Fax: +886-3-590-3983

[Http://www.baltech.com.tw](http://www.baltech.com.tw)